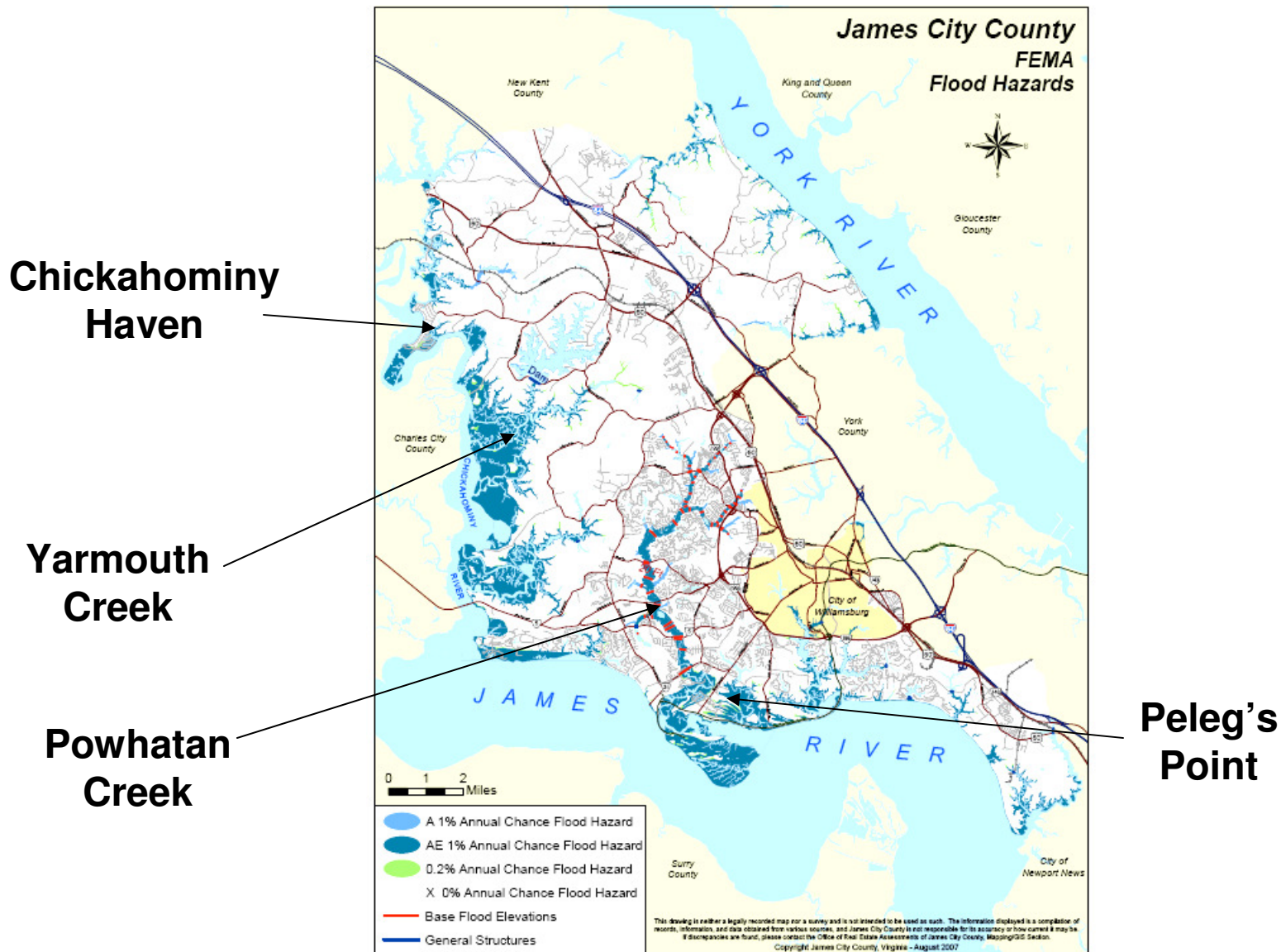


Flood Control in James City County



JCC Flood-Prone Areas



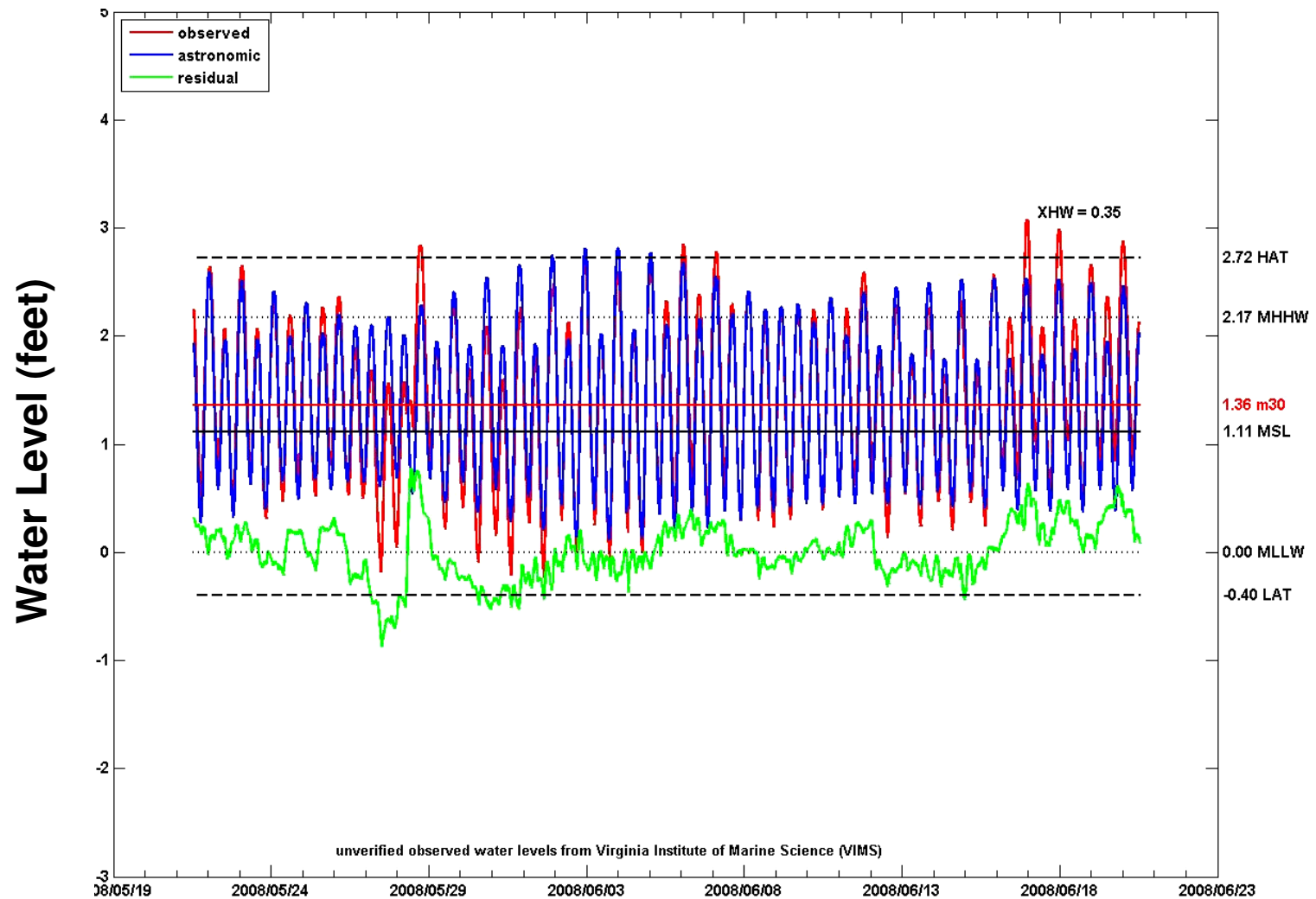
Flood Control Citizens' Workshop

- Sponsored by J4C on Feb 8, 2008
 - Citizens from flood prone areas participated
 - Jamestown 1607; Peleg's Point; Fieldcrest; St. George's 100; others
- 101 remediation measures were developed
 - Short and long term recommendations matrix
 - County, developer, VDOT, HOA, & citizen responsibilities identified & prioritized
- <http://www.jcc-j4c.org/2008.html#FloodControl>

Sample of Representative Recommendations from Workshop

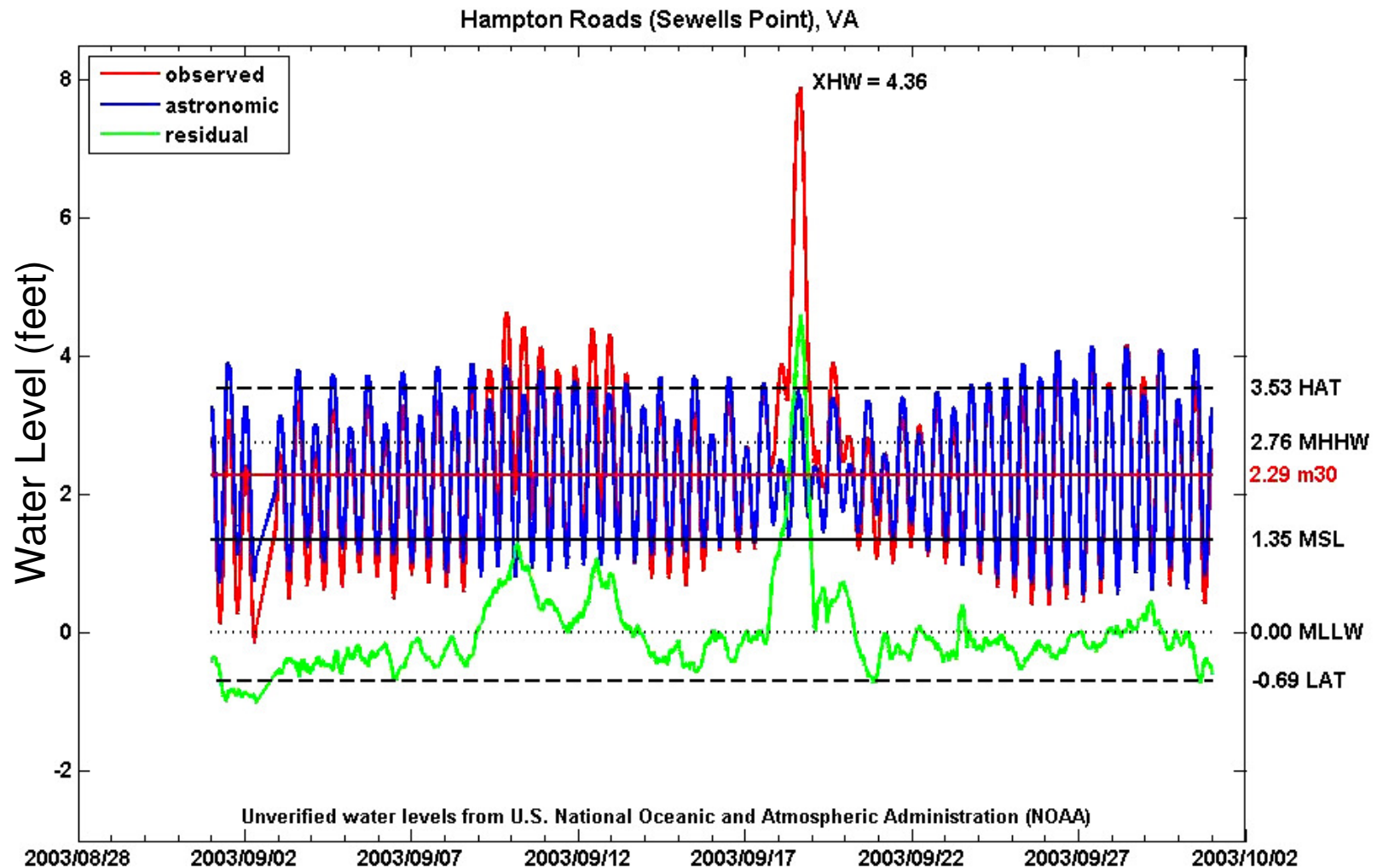
- Restrict development in flood prone areas
- Improve soil quality, natural vs those modified in development process
- Establish stream monitoring and restoration programs
- Assist neighborhoods in flood control measures
- Enforce limits on impervious cover from Watershed Management Plans

Water Level at Jamestown Ferry Pier



Date: June 2008

Flood Surge Due to Hurricane Isabel



Date, September, 2003

Monitoring & Predicting Water Level

- Monitoring program can lead to predictive capability for storm surges
 - VIMS initiative at Jamestown Ferry Pier
- Sea level is rising around County coastline
 - 3.5 – 4.5 inches by 2025; ~9 inches by 2050
 - Geologic subsidence
 - Global warming
 - Perceived need to take mitigation measures
 - Flood surges more frequent and more severe

Recommended County Responses to Rising Water Level

- Support VIMS monitoring and prediction activities
- Consider funding airborne LIDAR mapping
 - Plan for future flood/storm surge modeling
- Develop a long range strategy for land use
 - Modify zoning ordinances in low lying areas
 - Do not subsidize development in these areas
 - Plan for modification of drainage & sewerage systems in areas subject to future inundation

BACK UP IF REQUIRED

Global Sea Level (1992 – 2008)

